

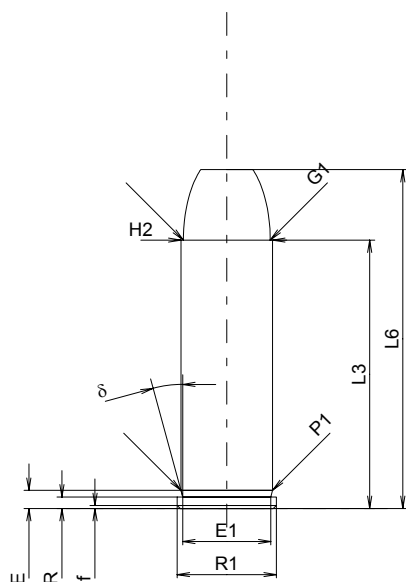
C.I.P.**454 Casull**

Country of Origin: US

TAB. IV

Date 95-03-09

Revision 00-06-07

**CARTRIDGE MAXI****Lengths**

L1	=	
L2	=	
L3 ¹⁾	=	35.50
L4	=	
L5	=	
L6	=	44.83

Case Head

R ¹⁾	=	1.52	-0.25
R1	=	13.10	
R3	=		
E	=	2.40	
E1	=	11.65	
e min	=		
delta	=	15°15'18"	
f	=	0.40	
beta	=		

Powder Chamber

P1	=	12.13
P2	=	

Junction Cone

alpha	=	
S	=	
r1 min	=	
r2	=	

Collar

H1	=	
H2 ¹⁾	=	12.12

Projectile

G1 ¹⁾	=	11.49
G2	=	
F	=	
L3+G ¹⁾	=	47.70

Pressures (Energies)**Method Transducer**

Pmax	=	3900 bar
PK	=	4485 bar
PE	=	5070 bar
M	=	17.50

Miscellaneous Dimensions

Fe ¹⁾	=	0.25
delta L	=	

CHAMBER MINI**Lengths**

L1	=	
L2	=	
L3 ¹⁾	=	35.74

Breech

R ¹⁾	=	1.52
R1	=	13.11
R2	=	
R3	=	
r	=	

Powder Chamber

E	=	
P1 ¹⁾	=	12.18
P2	=	

Junction Cone

alpha	=	
S	=	
r1 max	=	
r2	=	

Collar

H1	=	
H2 ¹⁾	=	12.13

Commencement of Rifling

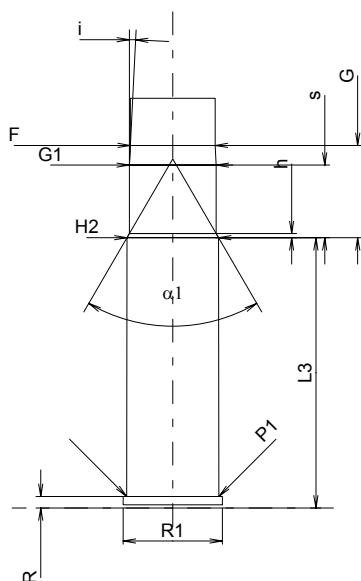
G1 ^{1)*}	=	11.49
G ¹⁾	=	12.20
alpha1 [*]	=	60°22'59"
h	=	0.55
s	=	9.60
i ^{1)*}	=	4°25'36"
w	=	

Barrel

F ^{1)*}	=	11.23
Z ¹⁾	=	11.43

Grooves

b	=	4.06
N	=	6
u	=	508.00
Q	=	101.54 mm ²



Scale 1:1

Dimensions in << mm >>
Dimensions and Tolerances for Proof Barrels
see Appendix CR 1.

Notes: 1) Check for safety reasons
* Basic dimensions